

In Demand Entry-Level Occupations

Anaheim – Santa Ana – Irvine Metropolitan Division

Orange County

An entry-level occupation requires a high school diploma or equivalent or less.



Combined Food Preparation and Serving Workers, Including Fast Food

84,680 TOTAL PROJECTED
JOB OPENINGS

\$11.97 MEDIAN
HOURLY WAGE



Cashiers

68,050 TOTAL PROJECTED
JOB OPENINGS

\$12.07 MEDIAN
HOURLY WAGE



Personal Care Aides

65,210 TOTAL PROJECTED
JOB OPENINGS

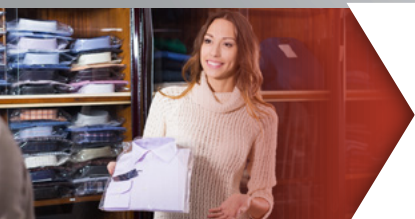
\$12.10 MEDIAN
HOURLY WAGE



Waiters and Waitresses

64,960 TOTAL PROJECTED
JOB OPENINGS

\$12.13 MEDIAN
HOURLY WAGE



Retail Salespersons

64,720 TOTAL PROJECTED
JOB OPENINGS

\$12.85 MEDIAN
HOURLY WAGE

Source: California Employment Development Department, Projections of Employment 2016-2026. Total projected job openings are the sum of new jobs, exits, and transfers. Occupational Employment Statistics Wage Survey, updated to 1st Q, 2019.

Note: The median hourly wage estimate has been calculated using three years of data that included wages that were collected prior to the minimum wage increases as required by California state law.

The EDD is an equal opportunity employer/program. Auxiliary aids and services are available upon request to individuals with disabilities.