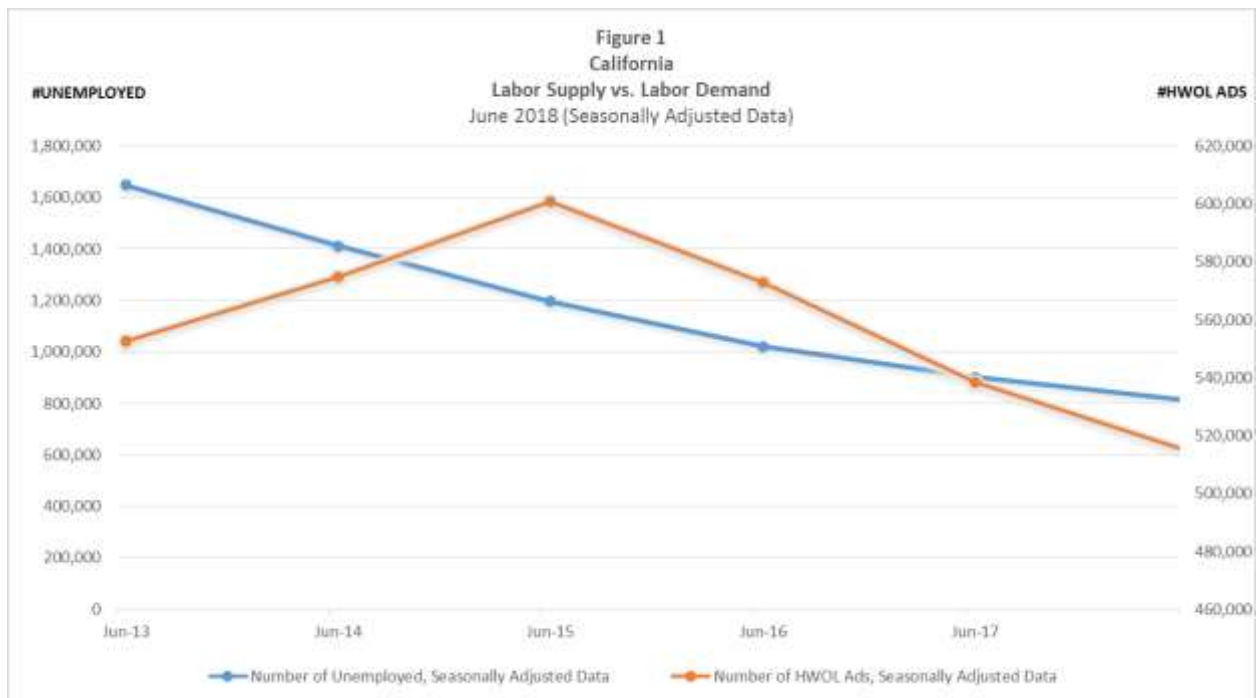


Nation

According to *The Conference Board Help Wanted OnLine*® (HWOL) Data Series, the nation saw a decrease in online job advertisements for June 2018, in comparison to May 2018. Nationally, there were 4,480,700 seasonally adjusted advertised jobs for June 2018, a decrease of 171,600 from May 2018.

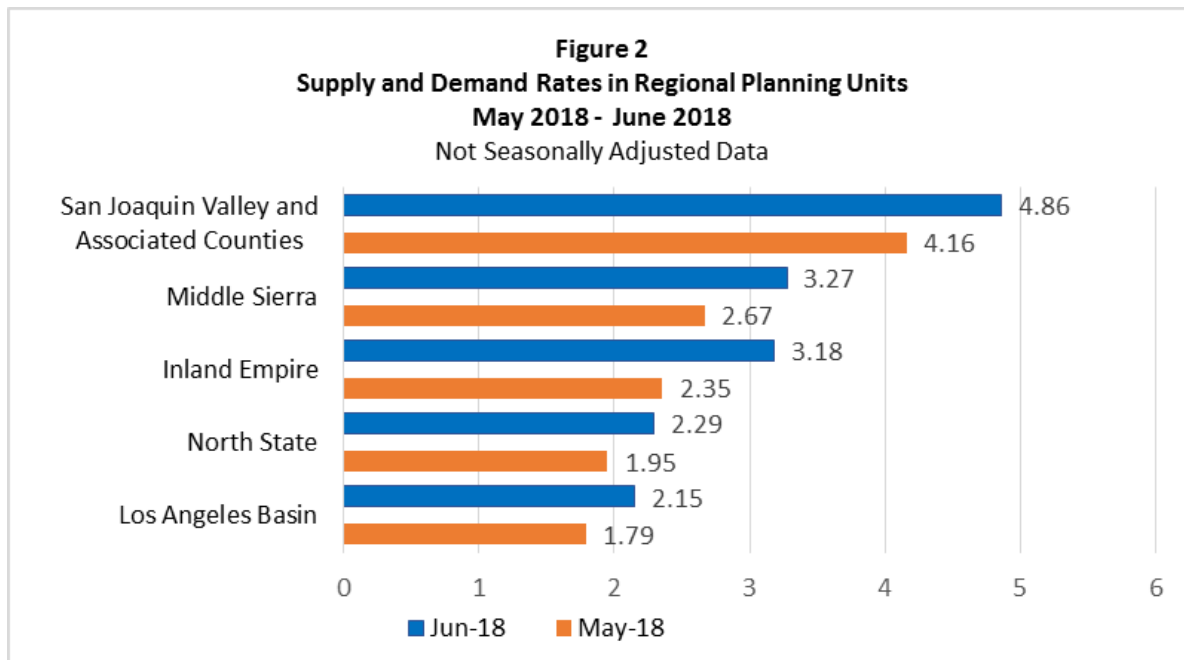
California

California had a total of 514,737 job advertisements in June 2018. The Conference Board reports that the state lost 11,864 job advertisements from May 2018 to June 2018. Figure 1 shows June labor supply versus demand seasonally-adjusted data in California.



Source: The Conference Board, Bureau of Labor Statistics, EDD

California's supply/demand rate was 1.58 for June 2018. Figure 2 displays month-over supply/demand rates in the top five Regional Planning Units for June 2018 and May 2018.



Supply/Demand rate is the number of unemployed divided by the number of advertised jobs.

Table 1 contains detailed figures of online job advertisement data for each of the 14 Regional Planning Units. The data is not seasonally adjusted.

Table 1

California Regional Planning Units	Year Ago	Month Ago	Current	Month-Over Change		Year-Over Change	
	Jun-17	May-18	Jun-18	Number	Percent	Number	Percent
Bay-Peninsula	113,341	125,742	127,904	2,162	1.7%	2,162	1.9%
Los Angeles Basin	125,764	115,651	115,233	-418	-0.4%	-418	-0.3%
Southern Border	51,938	48,705	48,406	-299	-0.6%	-299	-0.6%
Orange	48,242	45,583	45,578	-5	0.0%	-5	0.0%
East Bay	51,555	44,126	44,176	50	0.1%	50	0.1%
San Joaquin Valley and Associated Counties	35,435	30,793	30,277	-516	-1.7%	-516	-1.5%
Inland Empire	31,995	31,382	29,970	-1,412	-4.5%	-1,412	-4.4%
Capital	31,514	29,524	28,473	-1,051	-3.6%	-1,051	-3.3%
North Bay	20,135	21,023	20,406	-617	-2.9%	-617	-3.1%
Coastal	18,328	18,405	18,820	415	2.3%	415	2.3%
Ventura	8,942	8,660	9,014	354	4.1%	354	4.0%
North State	7,421	6,825	7,000	175	2.6%	175	2.4%
Humboldt	1,893	1,604	1,671	67	4.2%	67	3.5%
Middle Sierra	1,006	938	901	-37	-3.9%	-37	-3.7%

Regional Planning Units represent regions defined by the Workforce Innovation and Opportunity Act (WIOA) of 2014.

North State Regional Planning Unit Counties: Butte, Del Norte, Lassen, Modoc, Nevada, Plumas, Tehama, Trinity, Shasta, Sierra, and Siskiyou

Humboldt Regional Planning Unit County: Humboldt

North Bay Regional Planning Unit Counties: Lake, Marin, Mendocino, Napa, Solano, and Sonoma

Capital Regional Planning Unit Counties: Alpine, Colusa, El Dorado, Glenn, Placer, Sacramento, Sutter, Yolo, and Yuba

East Bay Regional Planning Unit Counties: Alameda and Contra Costa

Bay-Peninsula Regional Planning Unit Counties: San Benito, San Francisco, San Mateo, and Santa Clara

Middle Sierra Regional Planning Unit Counties: Amador, Calaveras, Mariposa, and Tuolumne

San Joaquin Valley Regional Planning Unit Counties: Inyo, Fresno, Kern, Kings, Madera, Merced, Mono, San Joaquin, Stanislaus, and Tulare

Coastal Regional Planning Unit Counties: Monterey, San Luis Obispo, Santa Barbara, and Santa Cruz

Ventura Regional Planning Unit County: Ventura

Los Angeles Regional Planning Unit County: Los Angeles

Orange Regional Planning Unit County: Orange

Inland Empire Regional Planning Unit Counties: Riverside and San Bernardino

Southern Border Regional Planning Unit Counties: Imperial and San Diego

Note – This workforce product was funded by a grant awarded by the U.S. Department of Labor’s Employment and Training Administration. The product was created by the recipient and does not necessarily reflect the official position of the U.S. Department of Labor. The Department of Labor makes no guarantees, warranties, or assurances of any kind, express or implied, with respect to such information, including any information on linked sites and including, but not limited to, accuracy of the information or its completeness, timeliness, usefulness, adequacy, continued availability, or ownership. This product is copyrighted by the institution that created it. Internal use by an organization and/or personal use by an individual for non-commercial purposes is permissible. All other uses require the prior authorization of the copyright owner.

Visit the following websites for more information:

U.S. Labor Data
Bureau of Labor Statistics
www.bls.gov

HWOL Data Series
The Conference Board
www.conference-board.org/data/helpwantedonline.cfm

Labor Market Information
California Employment Development Department
www.labormarketinfo.edd.ca.gov

