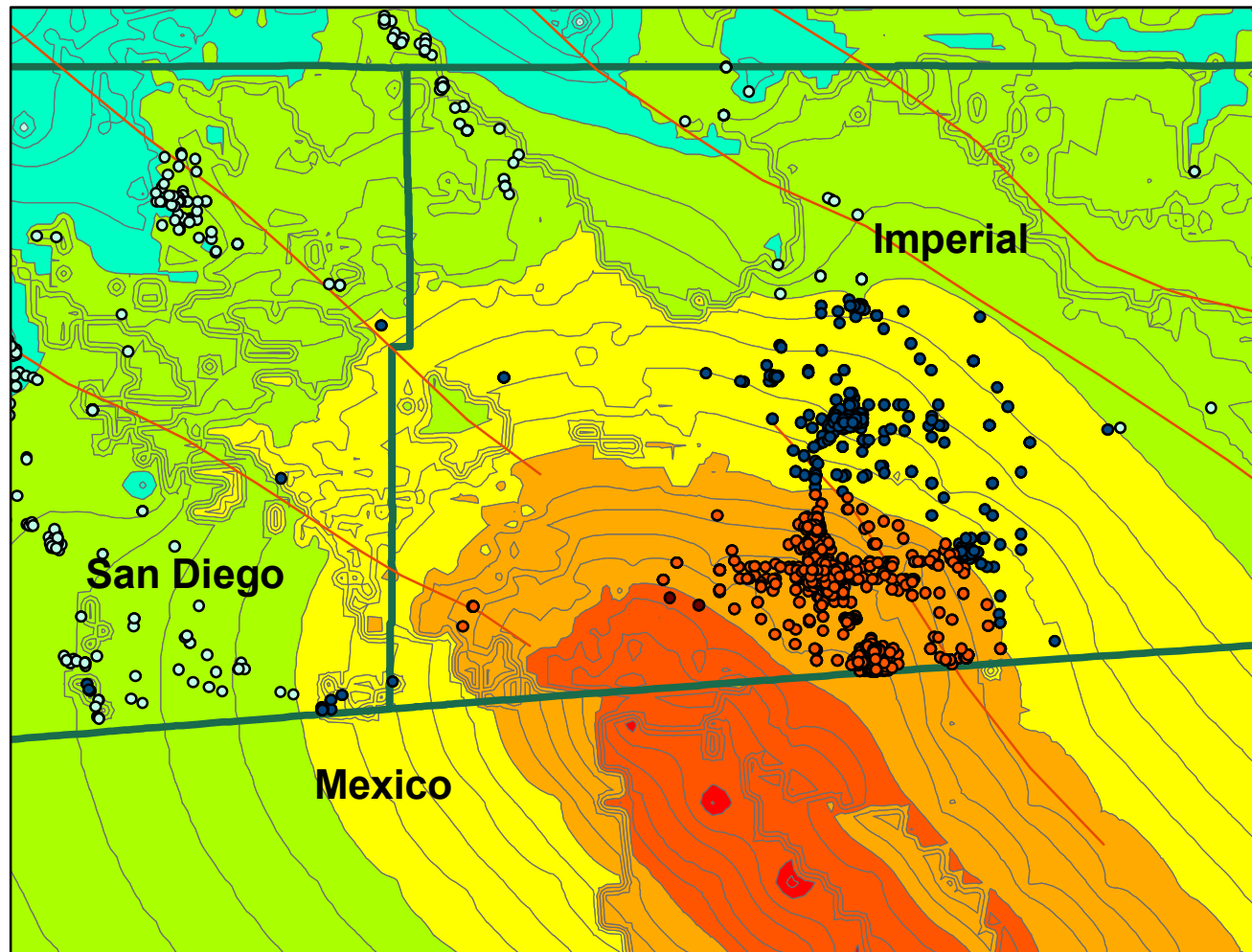


Potential Effect on California Business Establishments

Magnitude 7.2 Earthquake Baja California, Mexico April 4, 2010



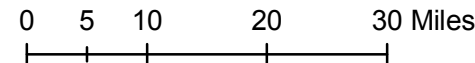
Business Establishments

- 2 in Zone VIII
- 2,163 in Zone VII
- 690 in Zone VI
- Other Business Establishments

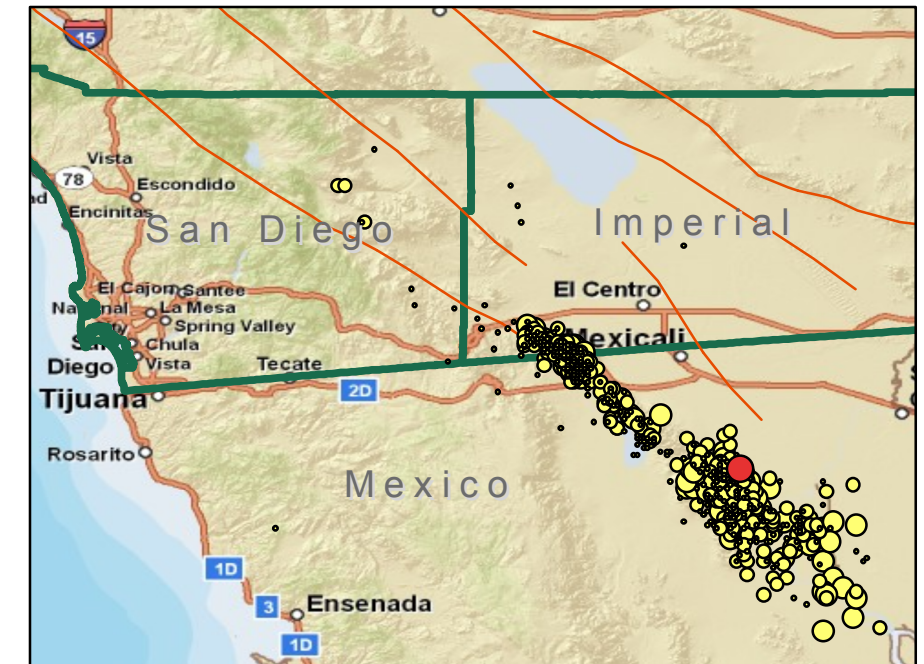
Modified Mercalli Intensity Scale

Zone Value

- III: weak shaking, no damage
- IV: light shaking, no damage
- V: moderate shaking, very light damage
- VI: strong shaking, light damage
- VII: very strong shaking, moderate damage
- VIII: severe shaking, moderate to heavy damage
- IX: violent shaking, heavy damage



Earthquakes April 4, 2010 through May 22, 2010

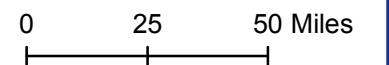


- Magnitude 7.2 Earthquake
- Earthquakes April 4 though May 22

Magnitude

- 1.9 - 3.3 (359)
- 3.4 - 3.9 (260)
- 4.0 - 5.4 (97)

— Fault Lines



Between April 4 and May 22, 2010, there were 716 earthquakes, including the 7.2 magnitude earthquake on April 4, 2010.

California Business Establishments in Strong through Severe Shaking Areas

Modified Mercalli Intensity Scale (MMI)

Second Quarter

MMI Level	Perceived Shaking	Potential Damage	2009 Establishments	April 2009 Employment	Quarterly Wages
VI	Strong	Light	690	12,430	\$113,394,553
VII	Very strong	Moderate	2,163	33,701	\$303,949,175
VIII	Severe	Moderate/Heavy	2	(confidential)	(confidential)

Largest Industry Sectors in Very Strong Shaking (MMI VII)

Industry Sector	Business Establishments	April 2009 Employment	Quarterly Wages
Retail Trade	418	5,737	\$32,470,465
Educational Services	689	4,741	\$53,916,911
Government	64	4,261	\$60,768,167
Agriculture, Forestry, Fishing & Hunting	118	3,934	\$26,152,518



Data source:

Quarterly Census of Employment and Wages (QCEW), developed through a cooperative program between the states and the U.S. Bureau of Labor Statistics. USGS NEIC Data Base and GIS data: earthquake.usgs.gov. Images: www.dailymail.co.uk. Base map data: ESRI ArcGIS Online.

Data notes:

Employment is from April 2009. Quarterly Wages are the total paid for the Second Quarter of 2009.

Analysis and cartography by:

State of California
Employment Development Department
www.labormarketinfo.edd.ca.gov
May 2010

